

artist, musician, author
(USA, b. 1952)

Paul Harryn

exhibition: "natural selection"
Sep 14-Oct 28, 2012

NAP Exhibition Space, Kutztown
gallery hours: F/s/s 11:00-3:00

Paul Harryn
Autumn Modul 2,
2011, acrylic,
12" x 12"

opening Fri Sep 14

6-9:00 PM artist's reception
8:00 PM gallery talk

one-to-ones

Fri and Sat, September 14, 15
9:00-4:30 by appt: 610 683-6440

Over the past thirty years, Paul Harryn's career has focused on painting, musical composition, performance, and installation where he often blurs the distinctions between idioms by commingling attributes from various disciplines.

Implicit in all of Harryn's work is an abiding investigation of Nature as referenced by John Yau (*Brooklyn Rail*): "He effectively combines a wide range of disparate information in order to suggest a constantly mutating world" and by Gerritt Henry (*Art in America*): "It is as fascinatingly original as it is, for all its shadowy mystery, deeply and poignantly familiar." Most of his work for the past ten years has been created outdoors in the



"My paintings are improvisational—a collage of visual phrases informed by nature and responding to the ever-changing conditions of its life force. Through multiple layers of application and natural selection, their surfaces ultimately reveal a visual and tactile history of the process and inspirations—an amalgamation of relevant events and technique developed over decades of familiarity with the mediums."—P.H.

woods near the Delaware River, between the Pocono Mountains and Upper Bucks County.

Harryn is currently working on a series of books for publication, a new CD of recent music, and an environmental painting project that will be featured in a film documentary.

In conjunction with his exhibition, Harryn will lead **The Absentee Ensemble** in a concert to benefit NAP. This combination of performance and exhibition will provide a privileged insight toward understanding the scope of Harryn's oeuvre. See next page for concert info. paulharryn.net

napconnection.com

nap preview

since 1974
New Arts Program
Lehigh Valley and Berks, PA

Office | Museum | Exhibition Space
William Zimmer Reference Library

173 W. Main Street
P.O. Box 0082
Kutztown, PA 19530-0082

610 683-6440
info@napconnection.com

HOURS: F/s/s 11:00-3:00
or by appointment

editorial & design by John Lotte

© 2012 New Arts Program Inc. Excerpts for reviews or announcements of NAP events are permitted. Photos and artwork are copyrighted by the artists and used here by permission; reproduction prohibited without prior permission.

2012-2013 season

Welcome to our *NAP Preview* and our 2012-2013 season.
Enjoy the read and see you at the events.

Exhibitions and One-to-Ones are free. For select presentations there is a small admission charge. Venue phone numbers, addresses, and general info inside. For inquiries and for up-to-the-minute schedule information call the NAP office: 610 683-6440.

Did you know that our residency artists are available for private one-to-one dialogues? Find out more about our One-to-Ones on the next page. **Sign ups for One-to-Ones** are by phone (610 683-6440) or at the NAP Exhibition Space office in Kutztown. Slots are limited to 12 per residency so sign up early.

Next time you write or call, give us your e-mail address. Occasionally, we may have some urgent news or a special event that will be announced via e-mail. Our address is: info@napconnection.com

the wall impromptu installations throughout the nap season

NAP Exhibition Space, Kutztown
gallery hours: F/s/s 11:00-3:00

a selection of works from
the NAP Limited Print Editions
Fri August 24 - Sun September 9

"Artists and Alzheimers"
1 installation by Helene Zucco
Sat September 29 - Sun October 14

A new NAP project which gives the public a chance to view artists' works or ideas in progress, exhibitions on the fly, and other work that normally might not find its way into a gallery setting—Raw, smart, sublime.

James F. L. Carroll
DIRECTOR

BOARD OF DIRECTORS

James F. L. Carroll
Joanne P. Carroll
Lincoln Fajardo
Janice Lipzin
Robert P. Metzger
Regina Gouger Miller
Ted Ormai
Harry L. Serio
Alan Shirk
Ellen Slupe
Bruce Wall
Ann-Sargent Wooster

Emeriti:

Bart Wasserman
William Zimmer

BOARD OF ADVISORS

Clytie Alexander
Robert Dick
Douglas Dunn
Jon Gibson
Philip Glass
Mary Griffin
Patricia Johanson
Mimi Johnson
Klaus Kertess
Michael Kessler
James Melchert
Andrew Miller
Meredith Monk
Ursula von Rydingsvard
Nancy Wolff, Esq

Emeriti:

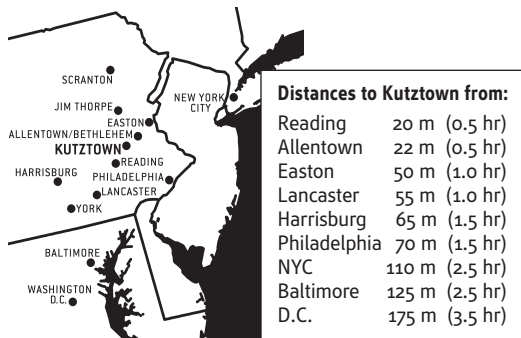
George S. Barrell
John Cage
Kent Floeter
Keith Haring
Robert Stanley

RECOGNITION

Ralph Bailits
Eileen Baxter
Steve Berardelli
Janice Carapellucci
Vicki DaSilva
David D'Imperio
Judy Geib
Mark Innerst
Kermit Oswald
Lisa Oswald
Tom Sterner

New Arts Program Inc. is a public tax-exempt, not-for-profit corporation organized under the laws of the Commonwealth of Pennsylvania and section 501 (c)(3) of the Internal Revenue Code. All donations to the Program are tax-deductible to the extent allowed by law.

since 1974
New Arts Program
Lehigh Valley and Berks, PA



Other event locations:

Northampton Community College 610 861-5062
3835 Green Pond Rd., Bethlehem, PA 18017

St. John's United Church of Christ
N. Whiteoak and W. Walnut Sts.,
Kutztown, PA 19530 For NAP events at St. John's
please call: 610 683-6440

Berks Community Television 610 374-3065
645 Penn St., Reading, PA 19601

DUTV 54 (Drexel University) 215 895-2927
3141 Chesnut St., Bdg 9B, Rm 4026
Philadelphia, PA 19104

Manhattan Neighborhood Network 212 757-2670
537 W. 59th St., New York, NY 10019

Paul Harryn and the Absentee Ensemble

in concert
Fri Sep 21,
2012

The music for Friday's performance will be accompanied by projected images corresponding to the development of Harryn's recent paintings. Readings of excerpts from his forthcoming book, *What Happened To Art*, will be interspersed throughout the performance.

In collaboration with **Richard Dee** and **Thomas Kort** on keyboards, **Paul Harryn** will explore his current interest in identifying the attributes of 'environment' through bass instrument improvisations.

All ticket proceeds will benefit the New Arts Program.

a concert to benefit
the New Arts Program
event location:
St John's UCC sanctuary
257 W. Whiteoak St., Kutztown
7:00 PM doors open
7:30 PM concert followed by a
reception with Mr. Harryn

Ticket info:

Advance or at the door \$9
General admission, seating limited.
Purchase tickets now in person at
NAP office, or by mailing a check
for \$9 per ticket to New Arts
Program, P.O. Box 0082, Kutztown
PA 19530-0082. Call 610 683-6440
if you need more information.
Sorry, no credit card payments.

third tuesday

artists & writers forum

—a monthly gathering of
musicians, poets, writers,
and visual and performing
artists held at 7:00 p.m. on the
third Tuesday eight months out
of the year. You are invited to
bring examples of your work for
discussion.

The NAP provides a cozy space
to meet for a collective dialogue
where you can converse about
your ideas, pool resources,
discuss materials, invite special
guests, spawn collaborations,
or hold workshops.

The NAP's video equipment,
slide projector, and reference
library are available for meetings.

For further information, please
call 610 683-6440 or write to
info@napconnction.com

2012
Sep 18
Oct 16
Nov 20
2013
Jan 15
Feb 19
Mar 19
Apr 16
May 21

2

NAP Exhibition Space, Kutztown
7:00 PM Third Tuesdays

about

One-to-one dialogues
Presentations
Performances
Exhibitions
Reference library
Television programs
Archives
Publications
Forums

Founded in 1974, the New Arts Program is a 501(c)(3) nonprofit educational art resource library, museum, and exhibition space dedicated to providing a forum for the Lehigh Valley and Berks County public to interact with today's major artists from the literary, visual, and performing arts. Performances and exhibitions are held in intimate, relaxed professional settings.

Additional programs include internships, two monthly one-hour cable television programs, an art research and slide library, NAP archives, NAP Limited Print Editions, Live On Paper: Book Forms, a literary journal, and other publications.

residencies

From its inception, the New Arts Program has been instrumental in inviting some of today's most provocative and insightful visual, performing, and literary artists and critics from around the world to take part in residencies at several regional venues.

Each residency has two days of scheduled personal one-to-one meetings between the guest artist and members of the community, plus a public dialogue in a presentation/performance or exhibition context. This access to major talents—with NAP as a conduit—cultivates direct

dialogue between artists and persons interested in the arts.

one-to-one dialogues

During each residency, several hours are reserved each day for persons from the community to meet individually with the guest artist. Cross-disciplinary interaction is encouraged, for example, a painter with a dancer. Topics and the formality of the dialogue are up to the individual—a walk, a chat over coffee, a presentation of their work (actual works, laptop, slides, video or, time permitting, even a studio visit).

One-to-Ones are free. Sign up by calling 610 683-6440 or in person at the NAP office. Six time slots are available each of the two days. Those who sign up should prepare for an hour of conversation. Sign up for each season begins in September and continues through the two days of each residency.

public presentations

On the first evening of each residency, the public is invited to a social hour of conversation with the guest artist, which could include a gallery talk, slides, video or audio, and/or, in certain instances, a performance. The informality of the small community space encourages discussion.

exhibitions

Eleven months out of the year, our intimate gallery features solo exhibitions of five first-rate working artists from this country and abroad. Complimentary exhibition booklets, which include reproductions and a dialogue with the residency artist, are available. Capping off each season is our popular invitational salon exhibition. Funding for exhibitions is in part through the generosity of local businesses.



composer
[USA, b. 1937]

Philip Glass

solo piano

in concert
Sat Oct 13, 2012

a concert to benefit
the New Arts Program
location: St John's UCC sanctuary
257 W. Whiteoak St., Kutztown
7:00 PM doors open
8:00 PM concert followed by a
reception with Mr. Glass

Ticket info:

Advance \$30; at the door \$40
General admission, seating limited.
Purchase tickets now in person at
NAP office, or by mailing a check
for \$30 per ticket to New Arts
Program, P.O. Box 0082, Kutztown
PA 19530-0082. Call 610 683-6440
if you need more information.
Sorry, no credit card payments.

Through his operas, his symphonies, his compositions for his own ensemble, and his wide-ranging collaborations with artists ranging from Twyla Tharp to Allen Ginsberg, Woody Allen to David Bowie, **Philip Glass** has had an extraordinary and unprecedented impact upon the musical and intellectual life of his times.

Born in Baltimore, Glass is a graduate of the University of Chicago and the Juilliard School. In the early 1960s, he spent two years of intensive study in Paris with Nadia Boulanger and while there, earned money by transcribing Ravi Shankar's Indian music into Western notation.

By 1974, Glass had a number of innovative projects, creating a large collection of new music for **The Philip Glass Ensemble**, and for the **Mabou Mines Theater Company**. This period culminated in *Music in Twelve Parts*, and the landmark opera, *Einstein on the Beach*, for which he collaborated with **Robert Wilson**. Since *Einstein*, Glass' repertoire has expanded to include music for opera, dance, theater, chamber ensemble, orchestra, and film. His scores have received Academy Award

nominations (*Kundun*, *The Hours*, *Notes on a Scandal*) and a Golden Globe (*The Truman Show*).

Over the past few years several new works were unveiled, including *Book of Longing* (Luminato Festival) and an opera about the end of the Civil War entitled *Appomattox* (San Francisco Opera). Glass' latest opera, *Kepler* (Landestheater Linz, Austria), premiered in 2009. The U.S. premiere of his *Symphony #9* (2011) took place at Carnegie Hall on January 31, 2012, as part of the composer's 75th birthday celebration. *Symphony #10* was completed in spring 2012 and premiered in France. He is currently working on an opera about Walt Disney slated for a premiere in Madrid in 2013.



The New Arts Program is "a non-academic approach to a nonacademic subject, and it works!" —Philip Glass, composer

about

continued

William Zimmer reference library

Housed within NAP's Exhibition Space, the library is an artist's or researcher's dream. The public is invited to use its resources without charge. Open Friday, Saturday, and Sunday during gallery hours or by appointment.

Here you'll find:

BOOKS—Every subject imaginable for the artist.

PERIODICALS—Current and lots of back issues.

EXHIBITION CATALOGUES—Hundreds from all over.

VIDEO ARCHIVE—Featuring NAP Video Festival winners and a collection of artist presentations recorded at the Program over the past thirty+ years.

SLIDE ARCHIVE—Over 40,000 slides of works by contemporary artists, with an emphasis on the past three decades. On-site viewing facilities.

CONSULTING and technical assistance on studio and arts management, alternative and co-op spaces, housing, and mailings. Ask about other services.

group gallery tours

Call 610 683-6440 to arrange for a group gallery tour or to discuss other options that are available to your group or classroom. Educators are encouraged to bring their classes—elementary through college. We can also visit your group or classroom with a presentation.

the nap store

Where else can you find a signed Keith Haring poster costing under \$500? ...or a DVD on crating, packing, and shipping art? The NAP Store catalogue appears in this *Preview*. New Arts Program supporting members may take 25% off prices of selected items.

booklets expand nap residency dialogue

Since 1997, the New Arts Program has been publishing limited-run booklets which document each NAP exhibition and artist residency. Included are reproductions of the works and commentary by and about the artist. Exclusive transcripts from New Arts Alive cable TV conversations are included. Booklets are available free of charge at each exhibition or presentation. For booklets by mail or from prior residencies, subject to availability, there is a small charge.

support

The New Arts Program would not be in operation without the generous support of its individual, organization and business sustaining sponsors; foundations; and a supporting membership base. Funding also in part by the Pennsylvania Council on the Arts, a state agency, and the National Endowment for the Arts, a federal agency.

painter/sculptor
[USA, b. 1948]

Ted Ormai

exhibition
Nov 9-Dec 23, 2012

NAP Exhibition Space, Kutztown
gallery hours: F/S/S 11:00-3:00

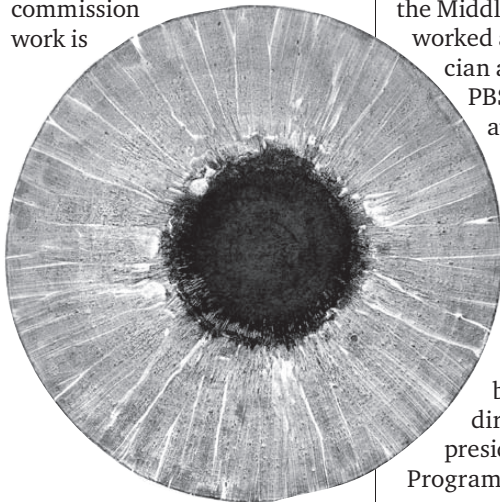
opening Fri Nov 9

6-9:00 PM artist's reception
8:00 PM gallery talk

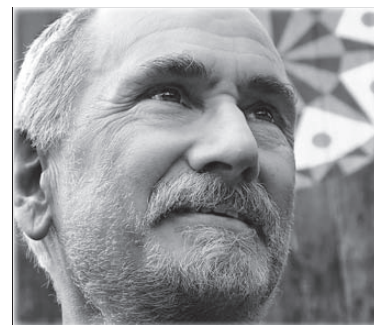
one-to-ones

Fri and Sat, November 9, 10
9:00-4:30 by appt: 610 683-6440

A lifelong artist from a family of artists, Ted Ormai was born in New York City and now lives and works in rural Pennsylvania. For four decades he has been a practicing artist in various media, including drawing, light-works, installations, outdoor sculpture, magnetic artwork, and interdisciplinary collaborations with dancers and musicians. His exhibition and commission work is



Nocturnal Hex, 2009, magnetized phosphorescent acrylic on Masonite, 20" diameter



"The 'magnetic' artworks are extensions of my light sculptures made in the 1980s, which had components influenced by Native American sand paintings and Zen garden patterns. The use of natural forces was inspired by the fire paintings of Yves Klein and Man Ray's Rayograph photos. Also, my drawings of aurora and aureola evolved into the use of actual magnetic fields to create images by moving iron particles and paint. In this way, I directly participate in the flow of the cosmos."—T.O.

included in the permanent collections of universities, museums, and private individuals.

During his early adulthood, Ormai was a 1970 Liberal Arts graduate of Pennsylvania State University; traveled to Africa, the Middle East, and Europe; worked as a lighting technician and cameraman for PBS; and was an Associate Artist with Robert Morris at the Atlantic Arts Center in Florida.

Ormai worked in the Pennsylvania Council on the Arts Artists in Education program and has been on the board of directors and vice president of the New Arts Program since 1990.

Funding for exhibitions in part through the generosity of local businesses



l to r: Kent Floeter, Saul Ostrow, Jon Gibson, Tom Johnson, Philip Glass, Ned Sublette

10 years back

rewind to the 2002-2003 nap season

What a spectacular season it was!—Ten months packed with residency guests, exhibitions, a benefit concert with Philip Glass and Jon Gibson, a video festival, and the debut of our monthly Artists and Writers Group Forum.

We wouldn't be gushing so, except that the NAP experience continues for the 2012-13 season with a total of *three* concerts, including the return of Philip Glass for another benefit concert, some fantastic visual artists coming in for residencies, and a loaded exhibition schedule.

To visit every year of NAP's history since 1974, look for the **NAP Synopsis** booklet on our website napconnection.com or ask for it at the NAP Exhibition Space.

employer matching

Your employer's matching gift program, lets you DOUBLE your gift to the New Arts Program. Find out if your employer matches gifts to 501 (c)(3) nonprofits and if you and your family members qualify. If so do these two things:

Obtain a matching gift form from your personnel office.

Next, send: 1) the completed matching gift form, 2) the member application found in this Preview, and 3) your check to: New Arts Program

P.O.B. 0082

Kutztown, PA 19530-0082

In any case, become an NAP member if you aren't already.

Kent Floeter

painter/sculptor

Saul Ostrow

art critic/curator

Jon Gibson

painter/musician/composer

Michael Rodriguez

painter

Akiko Kotani

fabric artist

Tom Johnson

musician/composer

Philip Glass

Ned Sublette

singer/songwriter/author

Hetty King

dancer/choreographer

stocks, cars, jewelry, antiques... How creative can you get with your gifts to the nap?

Our benefactors are becoming aware of the benefits of giving property to the New Arts Program in lieu of cash. Some members have also expressed an interest in including NAP in their final bequests. Speak to your accountant or tax advisor to decide what works best for you. Feeling creative? Contact James Carroll at 610-683-6440.



sculptor [USA]

Susan Manspeizer

recipient, Juried Solo Exhibition/Residency

exhibition
"the shell series"
Jan 18-Mar 3, 2013

NAP Exhibition Space, Kutztown
gallery hours: F/S/S 11:00-3:00

opening Fri Jan 18

6-9:00 PM artist's reception
8:00 PM gallery talk

one-to-ones

Fri and Sat, January 18, 19
9:00-4:30 by appt: 610 683-6440

Susan Manspeizer has been an exhibiting artist for more than 30 years. She is widely known for her ability to bend wood for use in constructing her linear, personal sculptures. Her line quality is noteworthy, as she uses a variety of markings including graphite and oil crayons on her bent wood sculptures.

Manspeizer has had 20 solo exhibitions throughout her career. She is currently represented in New York City by Walter Wickiser Gallery, and in Sarasota, FL, at State of the Arts Gallery. She is an exhibiting member at Silvermine Guild Arts Center, Ct.,

"All my work is made of wood. This material by nature was once living and had a former purpose. I have transformed the material into a new meaning continuing the life cycle of living things. I apply my linear sensibilities to the shapes, using either graphite or oil crayon, creating a patina through numerous layers. I like to think that my forms were lying at the shore absorbing the water and sun... taking on colors that are absorbent, radiant and soft."—S.M.



*Interiors, 2012,
bent wood, oil,
crayon,
40H" x 24W" x 12D"*

and Katonah Museum Artist Association, N.Y., and an exhibiting sculptor at ArtsWestchester, White Plains, N.Y. Her work is seen in museums and corporate public collections.

A recipient of numerous awards, Manspeizer has participated in the Art in Embassy program—having her work sent to Burkina Faso, Africa, and currently in the American embassy in Tallinn, Estonia. She is published in *Who's Who of American Women*, 19th ed., and *Who's Who in American Art*, 21st ed. Manspeizer teaches at Art Center of Northern New Jersey. susanmanspeizer.com

“Creating work that can transcend boundaries of time and culture is an interesting premise. Making something that is as visually relative now as it could be to early man is a fascinating concept.”—J.B.



painter/sculptor
(USA, b. 1956)

Joe Beddall

exhibition one
Feb 18-Mar 30, 2013

Northampton Community College
3835 Green Pond Road, Bethlehem
610 861-5062
gallery hours: M-F 8:00 AM-9:00 PM
Sat 9:00 AM-5:00 PM

meet the artist @ NCC
Thu Mar 7

9:30-3:00 one-on-ones at NCC
by appt: 610 683-6440
3:30-4:30 gallery talk
5:00-6:00 artist's reception

exhibition two
Mar 15-Apr 28, 2013

NAP Exhibition Space, Kutztown
gallery hours: F/S/S 11:00-3:00

opening Fri Mar 15

6-9:00 PM artist's reception
8:00 PM gallery talk

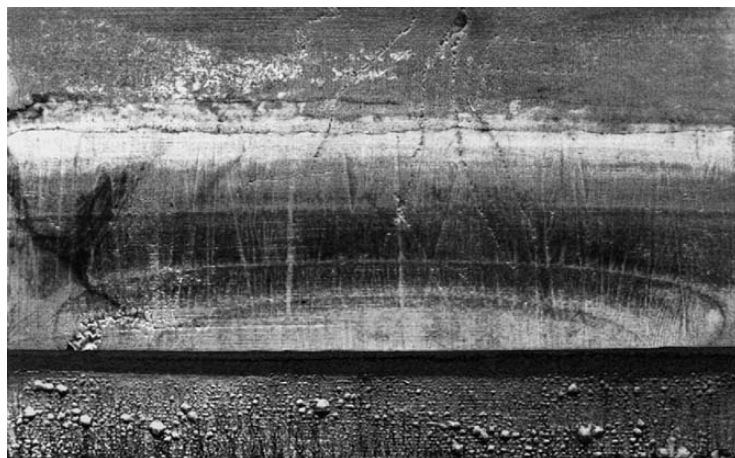
one-to-ones

Fri and Sat, March 15, 16 @ NAP
9:00-4:30 by appt: 610 683-6440

*Funding for exhibitions in part through
the generosity of local businesses*

Joe Beddall has spent the past 30 years of his creative life, as a visual artist in the Washington, DC area and State College, Pa., areas. In 2011, he was awarded a five-week residency in Obama, Japan, where he created public sculpture for the city's Chamber of Business. More recently he spent a four-week residency in Thimphu, Bhutan, conducting a workshop and installing work at the VAST arts organization under the direction of celebrated artist **Asha Kama Wangdi**. His work has found its way into private collections throughout the U.S., Europe and Asia.

Beddall was born in Reading, Pa. He received his degree in Art Education with an emphasis in sculpture from Kutztown State University in 1978. Upon graduation he moved to the Washington, DC area undertaking further studies in printmaking and ceramics at Northern Virginia Community College and Hinckley Pottery Studios respectively. After 14 years in the DC metropolitan area he relocated to State College, completing additional course work at Penn State University. joebeddall.com



Joe Beddall, *Northern Lights*, 2007, acrylic on aluminum panel, 9.75" x 16"

acrylic clinic

with Roy Kinzer featuring Golden Artist Colors
acrylic products

free lecture/demo
Sat Apr 6, 2013

location:
St John's UCC Fellowship Hall
257 W. Whiteoak St., Kutztown
10:00-noon

Please note location.

This clinic on acrylic paints, gels, and mediums will feature the acclaimed products manufactured by **Golden Artist Colors**. Golden employee **Roy Kinzer** will demonstrate his own painting process to illustrate a wide variety of products and their properties, including paints and pigments, viscosities, grounds and color mixing.

Learn how gels and mediums can extend paint and create unique textural surfaces. Learn about using grounds to create surfaces for watercolors, pastels, graphites, charcoal, pencil, and silverpoint. Kinzer will discuss **GOLDEN OPEN**—a slow-drying acrylic paint—and Digital Mixed

Media products that allow you to merge digital printing with paint. The clinic also covers the lightfast properties of pigments, proper acrylic priming techniques, and health and safety concerns. A free packet of literature and paint samples will be given to each attendee.

Painter **Roy Kinzer** has an M.F.A. (Vermont College) and a Certificate of Art (Pennsylvania Academy of Fine Art). He has exhibited extensively, including the Slater Museum in Connecticut and the Montclair Art Museum in New Jersey. His current paintings are aerial landscapes derived from altered maps and satellite images. He received the prestigious Pollock-Krasner award 2004 and exhibited at Denise Bibro Fine Art, NYC in April 2009. He has completed numerous commissions, one of the most recent for the Hyatt Regency New Orleans, that opened in October 2011.



"From the 1960s to the 1990s, much of contemporary music was considered by audiences to be difficult listening. This is the music I "grew up" on and embraced. It tended to be American experimental music: Cage, Ives, Cowell, et al. This is not to say it was all great, but it made demands. And often it offered rewards, to both the committed listener and player."—J.K.

pianist [USA] Joseph Kubera

in concert
Fri Apr 26, 2013

St John's UCC,
257 W. Whiteoak St., Kutztown
7:30 PM doors open
8:00 PM concert followed by a
reception with Mr. Kubera
general admission \$5 at the door

one-to-ones

Fri and Sat, April 26, 27
NAP Exhibition Space, Kutztown
9:00-4:30 by appt: 610 683-6440

Pianist **Joseph Kubera** has been a leading interpreter of contemporary music for the past three

decades. Recent activities include a video of John Cage's Music of Changes for Swiss RSI Television and a solo performance at Alvin Lucier's 80th Birthday Retrospective at Wesleyan University. He has performed solo at such festivals as the Warsaw Autumn, Berlin Inventionen, and Prague Spring and has worked closely with such legendary composers as John Cage, Morton Feldman, La Monte Young, and Robert Ashley. Among the composers who have written works for him are Michael Byron, Anthony Coleman, David First, Alvin

Lucier, Roscoe Mitchell, and "Blue" Gene Tyranny.

Kubera has been awarded grants through the National Endowment for the Arts and the Foundation for Contemporary Performance Arts. He is a core member of S.E.M. Ensemble, the DownTown Ensemble, and Ostravska Banda and has performed with a wide range of ensembles, from Steve Reich to the Brooklyn Philharmonic.

Kubera has toured extensively with the Cunningham Dance Company (at John Cage's invitation), and has recorded Cage's Music of Changes and Concert for Piano and Orchestra. Kubera's playing is heard on the Wergo, Albany, New Albion, New World, Lovely Music, O.O. Discs, Mutable Music, Cold Blue, and Opus One labels.

Kubera earned degrees in performance from SUNY Buffalo, studying piano with Leo Smit, and from the Peabody Conservatory where he studied with Walter Hautzig.

josephkubera.com

Funding in part through the generosity of local businesses.

etc

presentation by nap director available in schools/for groups

The New Arts Program has a knack for making today's arts exciting and approachable. Did you know that the "NAP experience" is portable?

James Carroll, director of the New Arts Program, and a former KU professor, is available to bring the NAP experience into public and private schools, high schools, colleges and universities, and social organizations.

His presentation underscores the ability of today's art to give students and adults a unique perspective of society and an insight into art's past. Topics or particular artists that Mr. Carroll will discuss can be tailored to your class or group.

To arrange a customized presentation for your classroom or group, please contact Mr. Carroll at 610 683-6440 or info@napconnection.com.

24th annual nap invitational

salon of small works



View of Salon of Small Works installation, 2010

exhibition May 24-Jul 14, 2013

NAP Exhibition Space, Kutztown
gallery hours: F/S/S 11:00-3:00

opening Fri May 24

6-9:00 PM reception

With 170 artists from 26 states and two countries represented at last season's salon, this is the summer exhibition to see in the greater mid-Atlantic area. Our salon is a regional gallery goers' favorite. Last year hundreds of visitors streamed in on opening night. The opening reception provides a great opportunity to

talk with the artists. Each artist is represented by a recent work measuring up to 200 sq. inches. There is tremendous diversity of styles and media, including video.

Most works are for sale and reasonably priced. Its nearly impossible to walk away without claiming at least one piece. An exhibition booklet is available.

Artists—nationally or internationally located—interested in exhibiting, see *Artist Opps* in this Preview.

Entry deadline: April 1, 2013.

Reception catering by Global Libations

Funding for exhibitions in part through the generosity of local businesses

on tv

New Arts televised live twice monthly

The New Arts Program produces two top-notch live TV programs that are televised to over 110,000 cable households in the Berks County area and streamed live over www.bctv.org. The programs are rebroadcast in Philadelphia and New York City.

James Carroll hosts the two shows with **Ron Schira** stepping in on occasion as guest host. Viewers are invited to join the dialogue by telephone during the live telecasts.

New Arts Alive—first aired in 1987—features a single artist during each one-hour show. Carroll and his guest converse as they present the artist's work.

Complementing our flagship show is **NAP Connection: Issues and Procedures** which features one to three guests who engage in a dialogue on a chosen topic.

IN BERKS COUNTY, tune in BCTV twice monthly for live broadcasts:

FIRST Wednesdays 6:00 p.m.
(Repeats that Fri 9:00 p.m.;
Sat 5:00 p.m.; Sun 8:00 a.m.)

FOURTH Wednesdays 7:00 p.m.
(Repeats that Fri 10:00 p.m.;
Sat 6:00 p.m.; Sun 9:00 a.m.)

BCTV availability:

- Comcast Reading/Hamburg Channel 13
- Comcast Oley Channel 4
- Service Electric Cablevision Channel 19 (Birdsboro, Fleetwood, Kutztown)
- Streamed live on www.bctv.org

IN PHILADELPHIA, catch rebroadcasts every Tuesday at 10:00 a.m. on Drexel's DUTV-54 (Comcast Cable and Urban Cable Works).

IN NYC, rebroadcasts are on Manhattan Neighborhood Network, Channel 1 on alternate Sundays at 7:00 a.m.

NAP TV schedule for this season

The following schedule applies to the *live* BCTV broadcasts. Repeat broadcasts vary in each service area as previously noted.

2012

WEDNESDAYS

- SEP 5 6:00 PM *New Arts Alive*
David Appel, dancer/
choreographer
- 26 7:00 PM *New Arts Alive*
Joe Beddall, painter/sculptor
- OCT 3 6:00 PM *NAP Connection*
TOPIC: Artists and Alzheimers
Helene Zucco and panel
- 24 7:00 PM *New Arts Alive*
Michael Winkler, painter
- NOV 7 6:00 PM *New Arts Alive*
TBA
- 28 7:00 PM *New Arts Alive*
Ted Ormai, sculptor
- DEC 5 6:00 PM *New Arts Alive*
Joseph Kubera, pianist
- 25 no program

2013

WEDNESDAYS

- | | |
|-------|-----|
| JAN 2 | |
| 23 | |
| FEB 6 | |
| 27 | |
| MAR 6 | |
| 27 | |
| APR 3 | TBA |
| 24 | |
| MAY 1 | |
| 22 | |
| JUN 5 | |
| 26 | |
| JUL 3 | |
| 24 | |
| AUG 1 | |
| 22 | |

Television program funding in part by the Pennsylvania Council on the Arts, Berks Community Television, local businesses, and individuals

etc

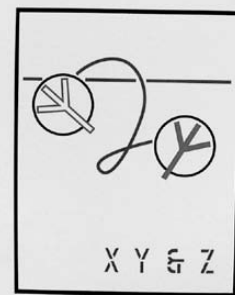
collection of limited editions for sale

New Arts houses many contributed art works that are intended for sale. Notable among these are **NAP Limited Print Editions**, which currently consists of over 60 editions by cutting-edge visual and performing artists.

These works by composers, architects, choreographers, sculptors, painters, and critics were created during residencies at the New Arts Program. Many were individually hand painted or otherwise altered by the artists and are remarkable for their ingenuity and idiosyncratic use of the medium. The small print runs number roughly two to 25 per signed edition.

Additionally, artists like **Paul Harryn** and **Lawrence Weiner** have donated or created exquisite works to benefit the New Arts Program. Weiner's little gem of a print, shown above, is still available for purchase. It was offset printed in three colors by Hawk Mountain Printing, Leesport, Pa., in an edition of 40. Private collector, corporate, gallery, and museum inquiries are welcome. Call or e-mail us and we'll fax or e-mail you a complete list of works. **NAP members get a 25% discount off selling prices.** Please call for an appointment. You won't leave empty-handed! Prints available by:

- Roberta Allen, sculptor
- Robert Ashley, musician/composer
- Connie Beckley, sculptor
- Johanna Boyce, choreographer/dancer
- Glenn Branca, musician/composer
- John Cage, musician/composer
- Ping Chong, multimedia
- Efrain deJesus, painter
- Tullio Desantis, sculptor



Lawrence Weiner, *untitled*, 2007, 15" x 12"

- Peter Eisenman, architect
- Molissa Fenley, choreographer/dancer
- Ellen Fisher, performance artist
- Jon Gibson, musician/composer
- Jeremy Gilbert-Rolfe, painter/critic
- Malcolm Goldstein, musician/composer
- Peter Gordon, musician/composer
- Edgar Grana, musician/composer
- Denise Green, painter
- Marcia Haffif, painter
- Keith Haring, painter
- Bill T. Jones, choreographer/dancer
- Ralph Lemon, choreographer/dancer
- Frank Lima, poet
- Alvin Lucier, musician/composer
- Joseph Masheck, art historian/critic
- Steven Paul Miller, poet
- Michael Morin, printmaker
- David Moss, musician/composer
- Steve Poleskie, sculptor
- Lucio Pozzi, sculptor
- David Shapiro, poet/critic
- Robert Stanley, painter
- Irene Stein, sculptor
- Barbara Strawser, painter
- Valentine Tatransky, art historian/critic
- Valery Taylor, sculptor
- Julius Tobias, sculptor
- Bernard Tschumi, architect
- Maryann Unger, sculptor
- Peter Van Riper, musician/composer
- Ursula Von Rydingsvard, sculptor
- Lawrence Weiner, painter
- Arnie Zane, photographer/dancer/
choreographer

artist opps

visual arts

24th annual invitational salon of small works

The culmination of the NAP season, this exhibition averages nearly 200 works and has always been well-attended. Artists internationally are invited to submit one recent original work, measuring up to 200 sq. inches. Sale of work is encouraged.

EXHIBIT DATE: May 24-July 14, 2013

LOCATION: 173 W. Main Street, Kutztown, Pa.

ENTRY FEE: none

ENTRY DEADLINE: In our hands by April 1, 2013

TO BE CONSIDERED: Any artist who has exhibited in an NAP Salon since 2008 will automatically be mailed an entry invitation by 03/01/13.

All others must submit:

- Complete contact information including e-mail address
- 10 copies of your work—inkjet, laser, or 8 x 10 photo prints preferred; CD-rom with JPEGs accepted; no slides. Or a DVD, for film/video. Examples should demonstrate a dedication to the continuance of a body of work.
- Artist statement (not resumé): Explain the thinking behind your work and describe your working process—One page typed.

call yourself passio'nap

State and federal funding for the arts continues to dwindle, so individual support is crucial to keep us afloat. By becoming a New Arts Program supporting member, you help us continue to make the following resources available free to the public:

- Consultations with guest artists
 - Exhibitions and exhibition booklets
 - Use of professional art research library
 - This events calendar
- Members receive:** Free admission to regular NAP events • 25% discount on books, prints, posters, videos, CDs, and more (some exceptions; limit on quantities for certain items) • Satisfaction of making it happen

nap supporting member application

Check one: \$30 NAP annual member
 \$50 NAP annual family member (two adults & children)

I am enclosing an additional tax-deductible gift to support NAP's goals:

\$200 \$150 \$100 \$ _____

I wish this gift to be used exclusively for the NAP Endowment Fund.

I wish to remain anonymous.

NAME _____

ORGANIZATION/OCCUPATION/DISCIPLINE _____

ADDRESS _____

CITY/STATE/ZIP _____

PHONE (_____) _____ EMAIL _____

Send with check to: New Arts Program, POB 0082, Kutztown, PA 19530-0082

- For return of photos, enclose a self-addressed stamped envelope.

RESTRICTIONS FOR INVITED ARTISTS:

- One work per artist
- Work completed within the past two years
- Size limit: 200 square inches, including frame
- Work must hang on a wall (except film/video)
- Video and film entries must be on DVD, 14 minutes or less, including credits (screening accommodations provided)
- Artist pays postage/freight costs, both ways
- Work must be delivered and removed in person or by carrier on dates to be specified

SUBMIT TO:

NAP Exhibitions, P.O. Box 0082
Kutztown PA 19530-0082

MORE INFO: 610 683-6440
info@napconnection.com

visual arts

juried competition for solo exhibition/residency at nap space

For the sixteenth consecutive season, artists nationwide are invited to compete for a solo exhibition/residency to be held at the New Arts Program Exhibition Space. One artist will receive the following:

- Six-week exhibition in 2014
- Two-day NAP residency
- Opening/artist reception
- Gallery talk by artist on reception night
- Press releases
- Write-up/photos in NAP press
- Appearance on *New Arts Alive* cable TV program broadcast live from Reading, Pa., taped broadcasts on Philadelphia and NYC cable
- Exhibition booklet with visuals

- \$550 honorarium plus lodging
- Insurance coverage of exhibited work

EXHIBIT/RESIDENCY DATE: Jan. 2014

LOCATION: 173 W. Main Street, Kutztown, Pa.

FEE: \$30 jury fee. Waived for current NAP members (Payable in U.S. dollars by money order or check through a U.S. bank.)

ENTRY DEADLINE: In our hands by October 31, 2013. Decision notification in December 2013.

TO ENTER: Send fee and all of the following:

- Cover letter:
 - Include complete contact information incl. e-mail address
 - One page typed.
- Artist statement (not resumé): Explain the thinking behind your work and describe your working process—One page typed.
- Ten copies of your work—inkjet, laser, or 8 x 10 photo prints preferred; CD-rom with JPEGs accepted; no slides. Label back of each print with:
 - 1) artist's name
 - 2) title of work
 - 3) arrow indicating top
 - 4) number 1-10 corresponding to typed list
- Typed list of works identified 1-10 as above; include title; date; medium; dimensions: h x w (x d)
- SASE for return of materials
- Do not send additional items

SUBMIT TO:

NAP Exhibitions, P.O. Box 0082
Kutztown PA 19530-0082

MORE INFO: 610 683-6440
info@napconnection.com

please patronize our sponsors

On your next visit to the NAP Exhibition Space, why not grab a bite at one of our supporting eateries. Check out all our business sponsors on the "Support" page of this Preview.

the nap store

NAP members deduct 25% off items marked *

Member's prices shown in parens: (♣)

DVD "Crating, Packing and Shipping Art" —our most popular item

The most thorough, professional, reliable documentation of its kind—a must for any artist or curator. **CRATING, PACKING AND SHIPPING** details various crate types and includes an invaluable segment on "markings for shipping." Produced by the New Arts Program, the DVD is packed with trade secrets you can't find anywhere else. Printed transcript included. 80-minutes. **DVD \$59. (♣\$44.) ITEM #1011**
VIDEO \$40. (♣\$30.) ITEM #1012

Keith Haring historic segments on DVD

KEITH HARING MAKING DRAWINGS, PRESENTATION AND EXHIBITION—Features Kutztown native Haring in 1982 working on a number of drawings. Set also includes a 29-sec. Haring animation originally shown in Times Square. His 9/10/87 opening at NAP Exhibition Space—documented here—drew over 750 people. Keith spent nearly five hours hanging with the crowd! A 1982 public presentation by Haring completes this Haring collection. Printed transcript included. 86-minutes. **DVD (2-DISC) \$44. (♣\$33.) ITEM #1013**
VIDEO \$32. (♣\$24.) ITEM #1014



Always in style

Your choice of **Keith Haring** classic design on black or white or **Lawrence Weiner** graphic on white. Silk-screened on back with NAP logo on the front. Heavyweight 100% pre-shrunk cotton. No discount on Ts.

S, M, L, XL \$20. ITEM #1021
XXL \$20. ITEM #1022

In-and out-of-print

Quantities are limited.
N.A.P.TEXT(S)—Literary journal loaded with stimulating writing, poetry, and visuals by literary, visual, and performing artists. Issues 1-3 are exquisite 16-page booklets; issues 4-7 are in a stylin' large poster format.
SINGLE ISSUE \$4. (♣\$3.) ITEM #1031
2 OR MORE \$3. EA (♣\$2.25 EA) ITEM #1032
IN AND OUT OF KUTZTOWN, 1974-1981—A classic portrait of the first seven years of the New Arts Program. Over two inches thick! A keeper. 427 pages.
SOFTCOVER \$30. (♣\$22.50) ITEM #1033

IN AND OUT OF NEW YORK—Catalogue for 1980 NAP exhibit held at White Column in NYC with works by former Kutztown University students who lived and worked in NYC. 40 pages.
SOFTCOVER \$5. (♣\$3.75) ITEM #1034

DANCE ON PAPER—Color catalogue for 2001 exhibition held at Lehigh University. Visual works on paper created by over 50 choreographers. 53 pages.
SOFTCOVER \$15. (♣\$11.) ITEM #1035

IDEAS FROM INDIVIDUAL IMPRESSIONS AND MARKS: PRINTS OF NON-PRINTMAKERS—Catalogue for 1988 exhibition held at Lehigh University—works by musicians, choreographers, and architects created through NAP Editions. 22 pages.
SOFTCOVER \$5. (♣\$3.75) ITEM #1036
JULIUS TOBIAS: WORK FROM 1965 TO 1992—Exhibition catalogue. 48 pages.
SOFTCOVER \$5. (♣\$3.75) ITEM #1037

Limited editions
Available for purchase in person or by phone. Call for appointment 610 683-6440. The New Arts Program houses many superb art works that are for sale to benefit NAP. Notable among these is **NAP LIMITED PRINT EDITIONS**, which currently consists of 60 print and poster editions by 42 leading contemporary visual and performing artists including Glenn Branca, Denise Green, Marcia Hafif, Keith Haring, John Cage, Ping Chong, Jon Gibson, Ursula Von Rydingsvard, Julius Tobias, and Bernard Tschumi. A complete list appears in this *Preview*.

LIVE ON PAPER HANDMADE BOOK FORMS—At NAP's invitation, internationally recognized artists in the literary, visual, and performing arts have created handmade editions which stretch the boundaries of the book form.

Other art works are also for sale to benefit NAP. Individual, corporate, gallery, and museum inquiries are welcome. NAP members are entitled to a 25% discount on most pricing.

A hardcover treasure

BUILDING FLATNESS, THE ART OF KENT FLOETER—Painter Kent Floeter (1900-2004) oversaw the creation of this monograph that, in both beauty and craft, is a benchmark of book publishing. Text contributions by Chuck Close and Raymond Ryan. Published in 2003 by Stephen David Editions Ltd, NY. 12.5"w x 11"h x 1," 208 pages with 139 full-page color reproductions. No discount.
HARDCOVER \$73. ITEM #1016
\$65. if purchased in person



Ashley, Glass, Reich, 7 others on music CD

CD CONNECTION is an exclusive NAP collection of instrumental and vocal works by some of new music's most influential composers. Each work was personally selected by its composer for this disc. Features the first ten musician/composers to have residencies at the New Arts Program: Philip Glass, Steve Reich, Jon Gibson, Meredith Monk, Robert Ashley, Glenn Branca, Joan La Barbara, Connie Beckley, Peter Van Riper, and Malcolm Goldstein. Released 1996.
LIMITED-EDITION CD \$20. (♣\$15.) ITEM #1015

*25% member discount applies to all items, except no discount on T-shirts Kent Floeter book. We reserve the right to limit quantities.

Member's prices shown in parens: (♣)

© K. Haring Keith Haring editions

Authenticated, attractively priced. In 1989 Keith Haring created a graphic for a large print and NAP concert poster, both screen printed in 1990. Also available, a few 1984 "Kutztown Connection" benefit posters with Keith's iconic NYC skyline/heart graphic (see T-shirt art). See these works at the NAP Exhibition Space or call for a JPEG. And grab a Keith T-shirt, too.

1990 SCREENED PRINT (30"H X 22") SIGNED \$1,000. (♣\$750.) ITEM #1041
1990 POSTER (22"H X 17") UNSIGNED \$20. (♣\$15.) ITEM #1042
1984 POSTER (33"H X 20") UNSIGNED \$20. (♣\$15.) ITEM #1043
SIGNED \$600. (♣\$450.) ITEM #1044

nap store orders

ITEM #	ITEM NAME OR HELPFUL DESCRIPTION	SIZE/COLOR	QTY	COST PER ITEM	TOTAL
_____	_____	_____	_____	\$ _____	\$ _____
_____	_____	_____	_____	\$ _____	\$ _____
_____	_____	_____	_____	\$ _____	\$ _____
_____	_____	_____	_____	\$ _____	\$ _____
_____	_____	_____	_____	\$ _____	\$ _____
_____	_____	_____	_____	\$ _____	\$ _____

MERCHANDISE TOTAL \$ _____

SHIPPING AND HANDLING: 1 item \$2.50 | 2-3 items \$4. | 4 or more items \$5. \$ _____

TOTAL AMOUNT DUE (add merchandise + shipping) \$ _____

Make check payable to: *New Arts Program*

NAME _____

ADDRESS _____

CITY/STATE/ZIP _____

PHONE (____) _____ EMAIL _____

10

Send with check to: New Arts Program, POB 0082, Kutztown, PA 19530-0082



New Arts Program
support

The New Arts Program would not be in operation without the generous support of:

sustaining sponsors



**Janet Goloub and
Martin Boksenbaum**

Long, Barrell & Co. Ltd.
Certified Public Accountants
135 N. Prospect, Reading, Pa.
610 779-6000

John Lotte
Allentown, Pa. 610 351-1575

Sorrelli Jewelry
220 W. Main St, Kutztown, Pa.
610 894-9857

White Crow Paper Mill
Custom Papermakers
Fleetwood, Pa. 610 944-9061

LOCAL ORGANIZATIONS

Northampton Community College
Bethlehem, Pa.

St. John's United Church of Christ
Kutztown, Pa.

FOUNDATIONS

**Foundation for Contemporary
Performance, NYC**

Greenwich Collection Ltd.

Meet the Composer, NYC
Funding for Meet the Composer Inc.
is provided with the support of the
Pennsylvania Council on the Arts, ASCAP,
the Virgil Thompson Foundation, and the
National Endowment for the Arts

Phaedrus Foundation, NYC

business sponsors

Please visit these local businesses
who have been supporting
the New Arts Program:

Adam n' Eve Boutique

309 W. Main Street, Kutztown
Tu-F 10:00-6:00, Sa 10:00-5:00
610 683-8117

The Art Store

462 W. Main Street, Kutztown
M-Th 9:00-7:00, F 9:00-5:30,
Sa 10:00-4:00
610 683-9203
10% off purchase with NAP mem. card

Berkleigh Eye Care

93 Constitution Blvd., Kutztown
Marlon G. Burt, O.D.
610 683-3888

Betty's

Wraps, smoothies, salads, soups
129 W. Main Street, Kutztown
bettyswraps.com 610 621-2642

Cagefreedesign.com

Fine art, digital restoration,
photography
Emily Branch 610 413-9565

Campus Inn

Proudly providing guest accomoda-
tions to NAP visiting artists for over
two decades
Old Route 222, Kutztown
610 683-8721

Colorfin LLC

Makers of PanPastel™ ultra-soft
painting pastels and Sofft™ Tools,
fine art and craft tools
Headquarters in Kutztown
484 646-9900
PanPastel.com | SofftArt.com

First National Bank in Fleetwood

Main & Franklin Sts, Fleetwood
610 944-7676

Global Libations

Roasting the finest fair-trade/
organic coffee daily
21 E. Main Street, Kutztown
484 646-9683
10% off order with NAP mem. card

Mark's Sandwich Shop

"A Kutztown tradition since 1966"
Seven days a week 10:00-10:00
123 W. Main Street, Kutztown
610 683-3626

Mr. Food Convenience Store

Seven days a week
6:30 am-11:00 pm
342 W. Main Street, Kutztown
610 683-7315

Pretty Dirty Ladies Inc.

Garden design and maintenance
prettydirtyladies.com
Toll-free 1-877 944-2211

Radius

radiustoothbrush.com
1-800 626-6223

SOS Business Machines Inc.

Canon copier/fax sales,
service, supplies
28 S. Center Avenue, Leesport
M-F 9:30-5:00
610 926-1299

Silver Maple Veterinary Clinic

Dogs, cats, ferrets, horses
Route 222, Kutztown
silvermaplevet.com 610 683-7988

Uptown Espresso Bar

466 W. Main Street, Kutztown
M-F 7:00 am-9:00 pm
Sa 8:00 am-7:00 pm
610 683-6401
10% off order with NAP mem. card

If you are a local business, call
now and be listed here next time.

nap supporting members

To these supporting members, a special *thank you* for their passion
for the NAP. Renewing or joining during the past season are:

Barry Assed	Fred and Jayne Keller	Louis Rice
Ray Beddall	Thomas C. Kennedy	Bob Ruhe
Steven Berardelli	Dolores F. Kirschner	Alan Shirk
Val Bertoia	Akiko Kotani	George K. Shortess
Gordon C. Boardman	Lynda Lambert	Lee Simpson
Elizabeth Bodien	John Landis	Ellen Slupe
Daniel Buffenmeyer	Janice B. Lipzin	Donna Snyder
Russell Bush	John Lotte and Cheryl Haughney	Cindy A. Strunk
James and Joanne Carroll	Liz Magno	Dan R. Talley
Jan Crooker	Alicia Maniloff	Shirley Thomas
David J. Deangelo	Susan R. Manspeizer	Lynn Umlauf
Dianne Vottero Dockery	Elizabeth Miller McCue	Don Vallere
Elizabeth A. Douglas	Lynn Millar	George Viener
Lincoln Fajardo	Michael L. Miller	Don Voisine
Lisa Eshleman Foster	Regina Gouger Miller	Bruce Wall
Janet Goloub	Terry Niedzialek	Joan Weber
Patricia Goodrich	Christine I. Oaklander, PhD	Joyce Ellen Weinstein
Matthew Hamilton	Jan L. Olinick	
Fred Heffner	Ted Ormai	



This project was supported by the Pennsylvania Council on the Arts, a state agency, through its regional arts funding partnership, Pennsylvania Partners in the Arts (PPA). State government funding for the arts depends upon annual appropriation by the Commonwealth of Pennsylvania and support from the National Endowment for the Arts, a federal agency. PPA is administered in this region by the Berks Art Council.